

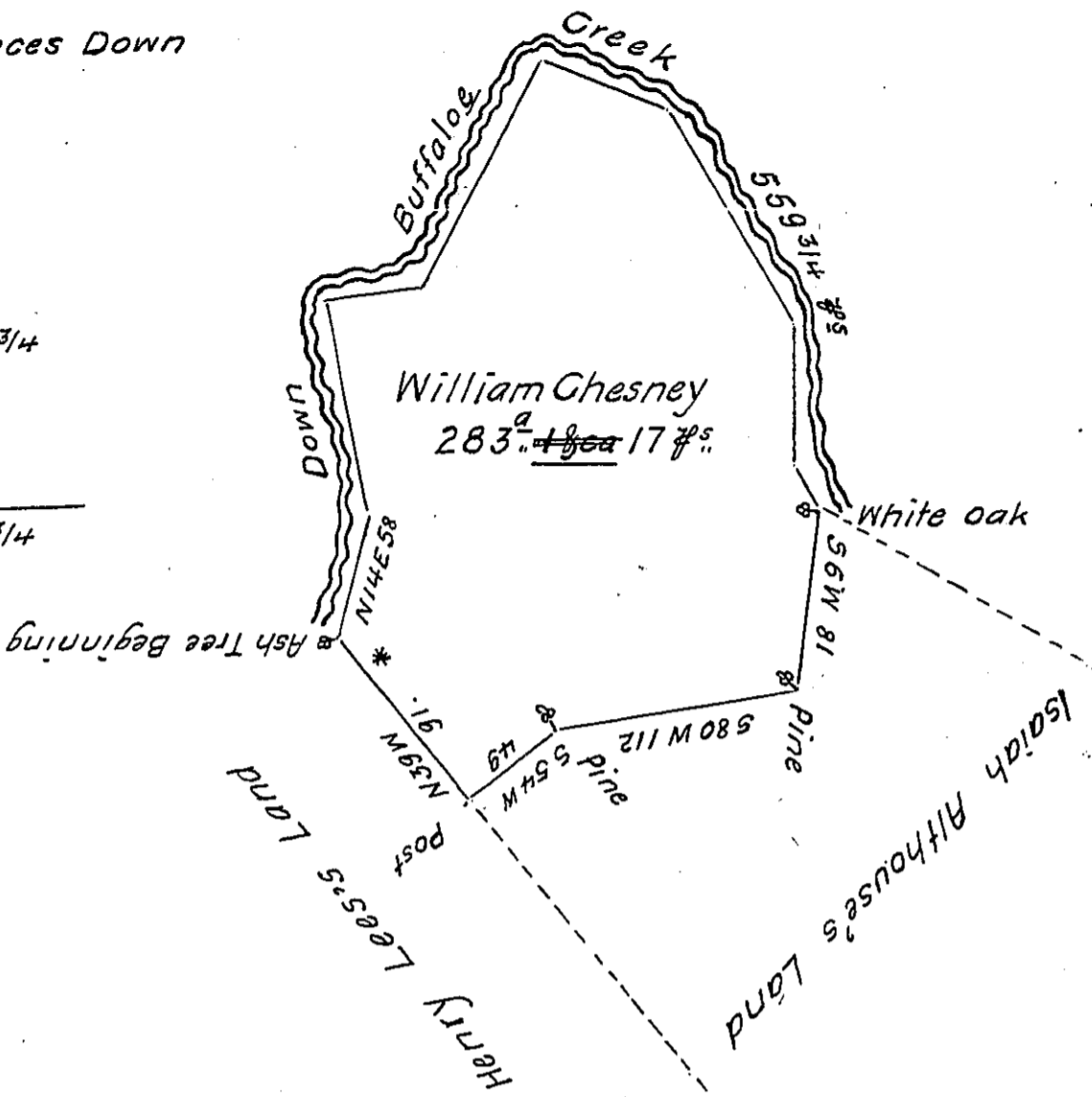
FORM No. 1.

Courses & Distances Down the Creek

- \* N 14 E 58
- N 11 W 92
- N 82 E 43
- N 29 E 116
- S 69 E 55 3/4
- S 30 E 112
- South 62
- S 35 E 21

---

- 559 3/4



The Draught of a Tract of Land called \_\_\_\_\_ Situate in  
 Buffalo Township in Northumberland County Containing Two Hundred  
 and Eighty Three Acres and Seventeen Perches with the usual Allowance  
 of Six Acres 7/8 Cent for Roads &c. Surveyed the 14<sup>th</sup> Day of December Anno  
 Domini 1771 In Pursuance of an Order of Survey to William Chesney  
 bearing Date at Philadelphia the 3<sup>d</sup> Day of April Anno Domini 1769  
 and Numbered 2329.

To John Lukens Esq. S. G. }      W<sup>m</sup> Maclay  
 of Pennsylvania }

IN TESTIMONY that the above is a copy of the original remaining on file in  
 the Department of Internal Affairs of Pennsylvania, made  
 conformably to an Act of Assembly approved the 16th day of  
 February, 1833, I have hereunto set my Hand and caused  
 the Seal of said Department to be affixed at Harrisburg,  
 this twenty-fourth day of December 1905.

*Isaac R. Brown*  
 Secretary of Internal Affairs.